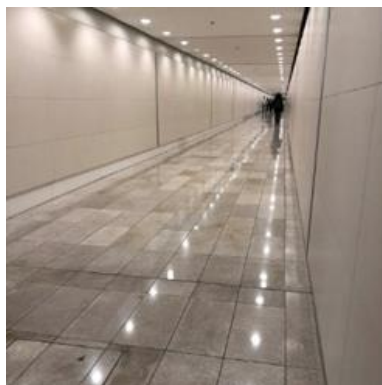


# Tunnel Geology: A Self-Guided Walking Tour of Downtown Houston's Buildings (2019)

## TEAL LOOP – 1/8 MILE (~10 MIN)



### FROM TOTAL PLAZA TO ENTERPRISE PLAZA



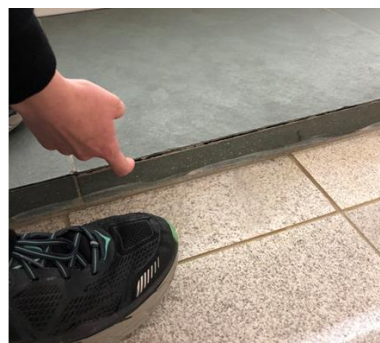
#### Flooring

Granodiorite (grey intermediate intrusive igneous)  
 Granodiorite (quartz 20-60% and plagioclase 65-90%) with uniform small-medium grained crystals, weathering present in different tiles



#### Accent

Slate (dark grey-green low grade metamorphic)



## ENTERPRISE PLAZA – 1100

### LOUISIANA

#### Flooring/Walls

Tufa (Travertine, continental sedimentary)

Travertino Romano (trade) from Tivoli near Rome in Italy

Also known as Romano Classico or Travertine Classico and Travertino Romano Antico (darker varieties)

Walls and flooring all travertine

Tufa/Travertine: formed by algae/calcium carbonate in hot springs, phytoherms (freshwater reefs) and thrombolite-stromatolites; not to be confused with tuff/tufo (igneous)





Observed: stromatolite patterns/precipitation growth dominant feature, some vugs partially to fully filled with more transparent cement

## ONE ALLEN CENTER – 500 DALLAS



### Flooring/Walls

Fossiliferous Limestone (light tan sedimentary)

Observed: gastropod fossils and others unidentified

### Accents

Marble (brown metamorphic)

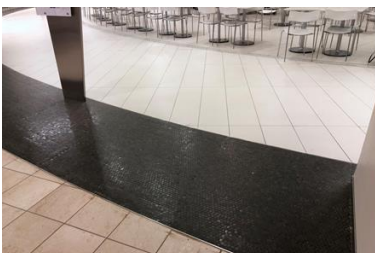
“Dirty” marble with fractures and calcite veins

Marble veins: due to various mineral impurities such as clay, silt, sand

### Transition into Circular Court

Best guess: Diabase/Gabbro (dark grey-black mafic intrusive igneous)

Circular tiles diabase/gabbro containing small grained but just visible to naked eye dark minerals



# BEFORE YOU GO

- **Safety**
  - Look up, not at your phone, when navigating downtown
  - Please be mindful of the traffic lights, pedestrian signals, bike lanes, and buses
  - Buses make frequent stops and can sometimes hop curbs
  - Some curbs, pavements, and streets may be uneven
- **Etiquette**
  - Please review the walking guide prior to arriving downtown to maximize time spent on the tour
  - Please be mindful of downtown employees and keep slower pedestrian traffic to the right so they can go about their business
  - Try to walk in pairs if walking around downtown as a group
  - If approached by a homeless person, try to be firm but respectful

# REFERENCES

- Houston Geological Society, 1995, Walking Tour of Downtown Houston Building Stones: Research Committee, Philip W. Porter
- Houston Gem and Mineral Society, Houston Geologic Society, 2008, Walking Tour – Houston Building Stones, Neal Immega
- Fossils in the Architecture of Washington, D.C.: <http://dcfossils.org/index.php/gallery11/#origins>
- Brian Allison, Earth Science Guy blog (<http://mnearthscienceguy.blogspot.com/2012/07/minnesota-geology-monday-granites-of-st.html>)
- Wikipedia
- Geology.com

# CONTRIBUTORS

- Sheila Echols-Smesny, *Red Shoes. Red Wine.*
- Christen Peevy, *Short Sweet & Lovely*
- Katy Mainwaring

